

# Artec 510A

## POWERED, BI-AMPLIFIED LOUDSPEAKER SYSTEM



**>> 360 W continuous  
low frequency  
3rd Generation Class D  
power amplifier**

**>> 180 W continuous  
high frequency  
3rd Generation Class D  
power amplifier**

**>> 1 x 10" cone speaker**

**>> 1" exit compression  
driver with constant  
directivity horn**

The D.A.S. Artec 510A is a 2-way vented loudspeaker system designed for applications covering speech reinforcement and program reproduction.

The low end utilizes a high efficiency 10" low frequency speaker with 3" voice coil.

The high end makes use of a 1" exit compression driver with 1.75" titanium diaphragm, coupled to a 110° x 50° horn.

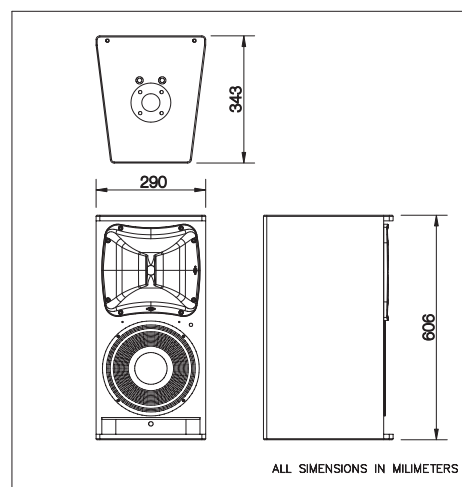
The unit has a robust grille design internally lined with acoustically transparent filter cloth to protect the loudspeaker components. The covering is resistant to wear and tear, provides protection from dust and dirt.

4 integrated rigging points that accept 10M forged steel eyebolts or "U" bracket make suspension in either the horizontal or vertical positions safe and simple.

### Technical Specifications

Nominal LF Power Amplifier	720 W peak - 360 W continuous
Nominal HF Power Amplifier	360 W peak - 180 W continuous
Input Type	Balanced differential line
Input Impedance	Line: 20 kohms
Sensitivity	Line: 1.95V (+ 8dBu)
On-axis Frequency Range (-10dB)	45 Hz - 20 kHz (Flat preset)
Maximum Peak SPL at 1m	128 dB
HF Horn Coverage Angles (-6dB)	110° x 50°
Enclosure Material	Birch Plywood
Finish	Isoflex Black Paint
Transducers / Replacement Parts	LF: 1 x 10P / GM 10P HF: 1 x M-60N / GM M-60N
Connectors	INPUT: Female XLR LOOP THRU: Male XLR AC INPUT: PowerCon NAC 3 FCA
AC Power Requirements	115 V, 50Hz/60 Hz 230 V, 50 Hz/60 Hz 170V @ 230V
Dimensions (H x W x D)	60.5 x 29 x 34.5 cm (23.8 x 11.4 x 13.6 in)
Weight	13 Kg (28.7 lb)
Accessories (optional)	TRD-2, TRD-6, AX-SPG1, AX-SPG2, AXF-A510, AXR-A500, AXU-A510, AXW-3, ANL-2.

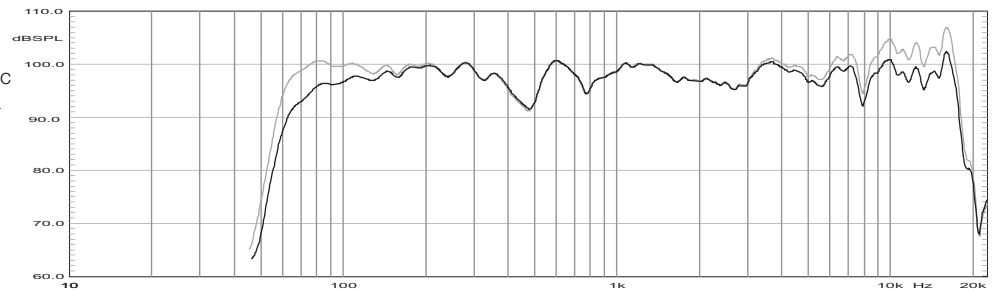
### Dimensions



<sup>n</sup> Based on a 2 hour test using a 6dB crest factor pink noise signal  
<sup>p</sup> Conventionally, 3dB higher than the RMS measure  
<sup>\*</sup> Corresponds to the signal crests for the test described in <sup>n</sup>

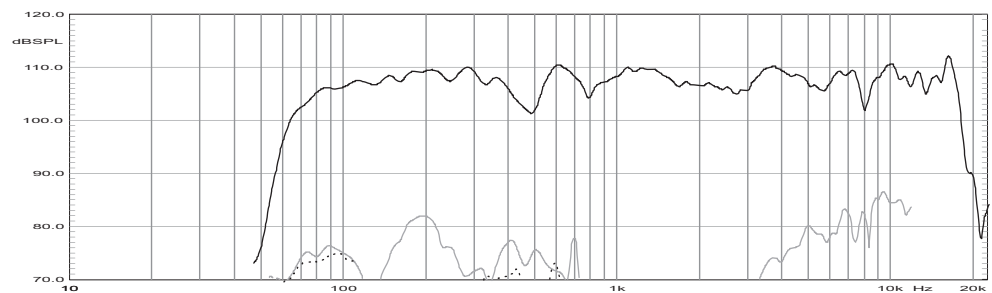
### Frequency Response

Frequency response at 1m of a unit radiating to an anechoic environment and driven by a -20dBu swept sine signal with Flat preset (Black) and Boost preset (Grey).



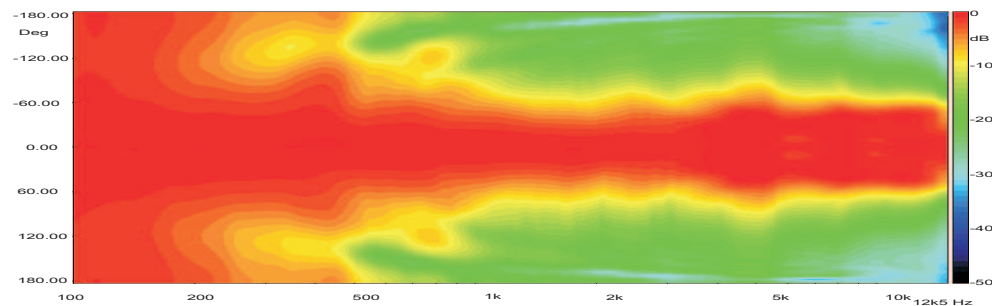
### Distortion

Second Harmonic Distortion (grey) and Third Harmonic Distortion (dotted) curves for a unit driven by a swept sine wave signal (-10dBu).



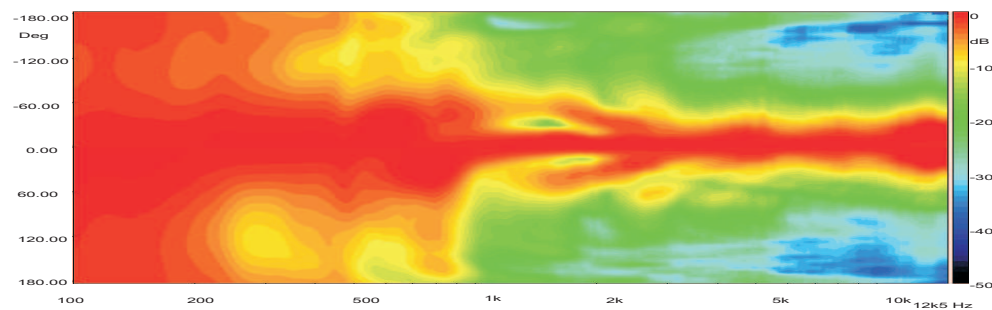
### Horizontal Directivity.

Shows normalized horizontal isobar plot.



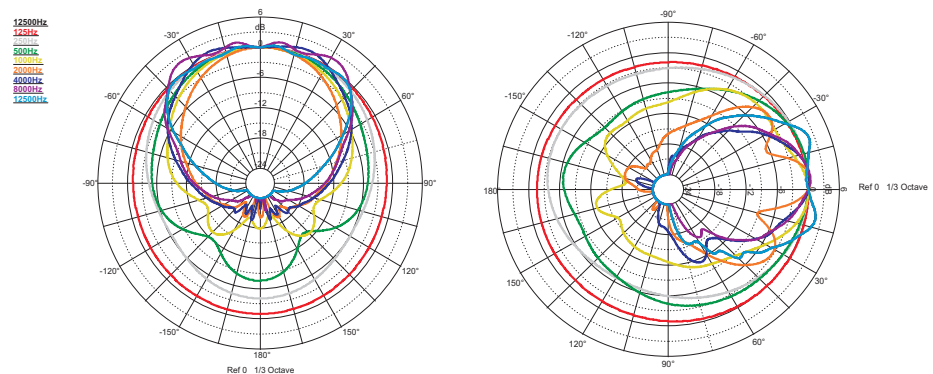
### Vertical Directivity.

Shows normalized vertical isobar plot.



### Polar Response.

Shows the 1/3 octave band horizontal (left) and vertical (right) polars for the indicated frequencies. Full scale is 30dB, 6dB per division.



NOTES: Frequency response measured at 4m (13.12ft). For better detail, only light smoothing (1/12th octave) has been used. Polars were acquired by placing the unit on a computer controlled turntable inside a 411 m<sup>3</sup> (14514 ft<sup>3</sup>) anechoic chamber. Measurement distance is 4m (13.12ft).

Product improvement through research and development is a continuous process at D.A.S. Audio. All specifications subject to change without notice.



**D.A.S. Audio S.A.**  
C/ Islas Baleares, 24  
46988 Fuente del Jarro  
Valencia - SPAIN  
Tel. 961 340 525 - Tel. Intl. +34 961 340 860  
Fax 961 340 607 - Fax Intl. +34 961 340 607

**D.A.S. Audio of America Inc.**  
Sunset Palmetto Park - 6816 NW 77th Court  
Miami, FL 33166 U.S.A.  
Tel. 305 436 0521 - Fax. 305 436 0528  
Toll Free: 1 888 DAS 4 USA

**D.A.S. Audio Asia Pte. Ltd.**  
25 Kaki Bukit Crescent # 01-00/ 02-00  
Kaki Bukit Techpark I - Singapore 416256  
Co. Reg. No: 200704134E  
Tel. +65 6742 0151 - Fax. +65 6742 0157

[www.dasaudio.com](http://www.dasaudio.com)